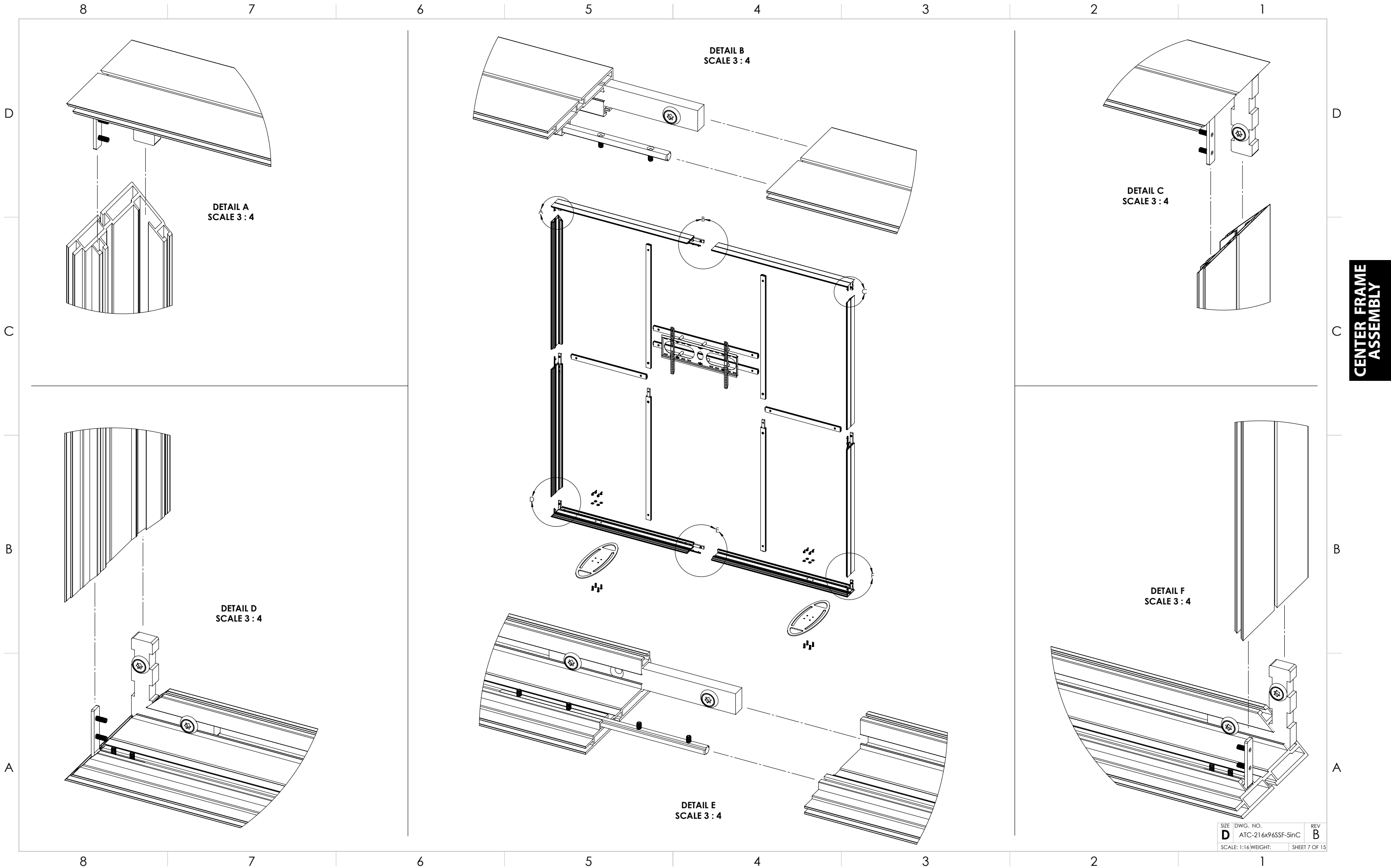


**PLEASE REFER TO PAGE 18 OF
MANUAL FOR SEG INSTRUCTIONS**

- NOTES: UNLESS OTHERWISE SPECIFIED**
- 1. **NUMBERED HEX-BALLOONS WILL BE THE SAME AS THE NUMBERED LABELS ON EACH FRAME FOR ASSEMBLY.**

**CENTER FRAME
ASSEMBLY**



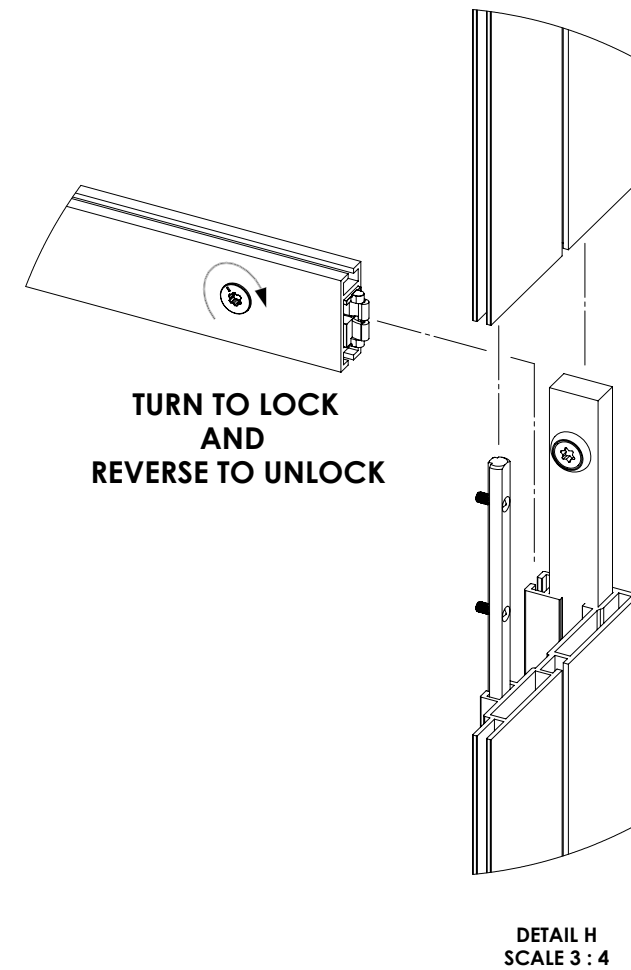
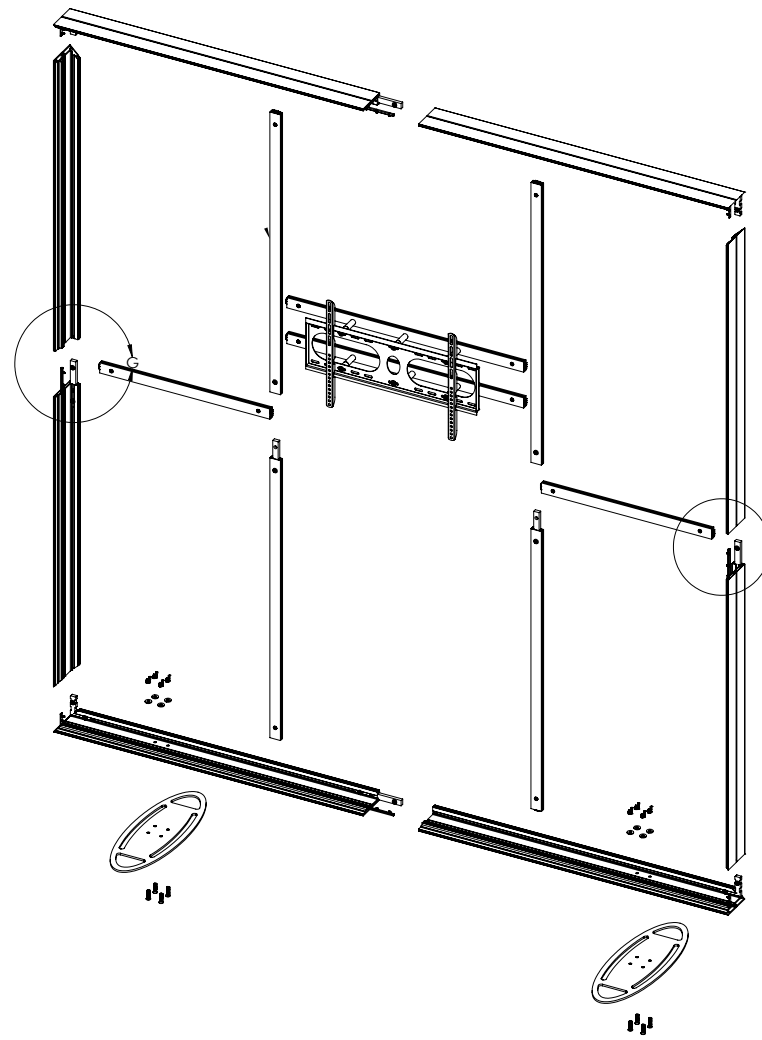
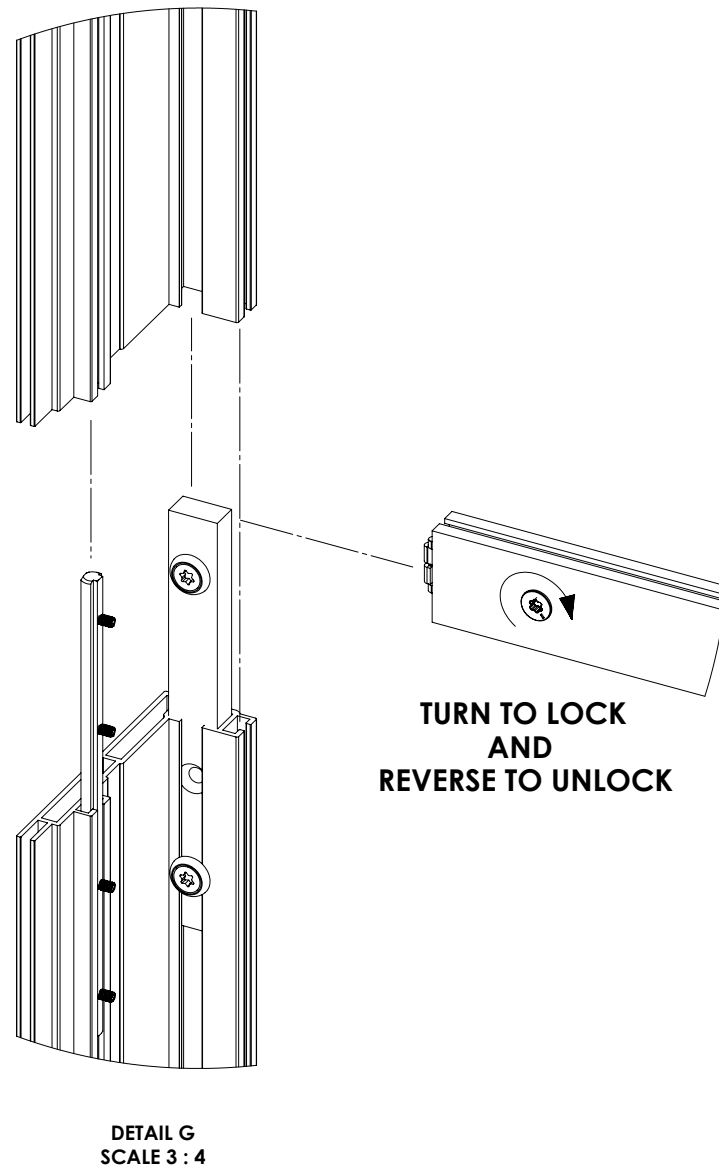
CENTER FRAME
ASSEMBLY

D

C

B

A



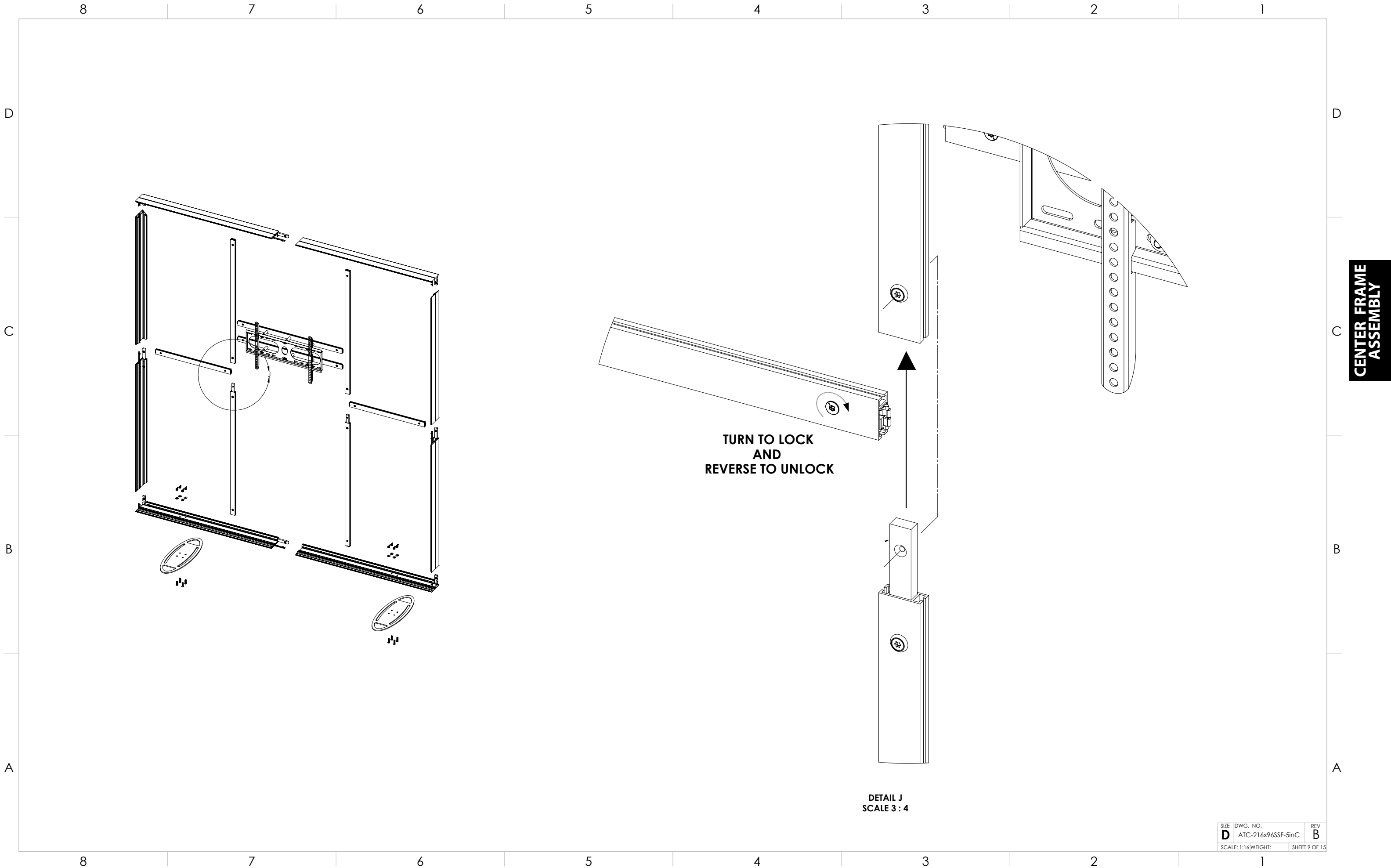
D

C

B

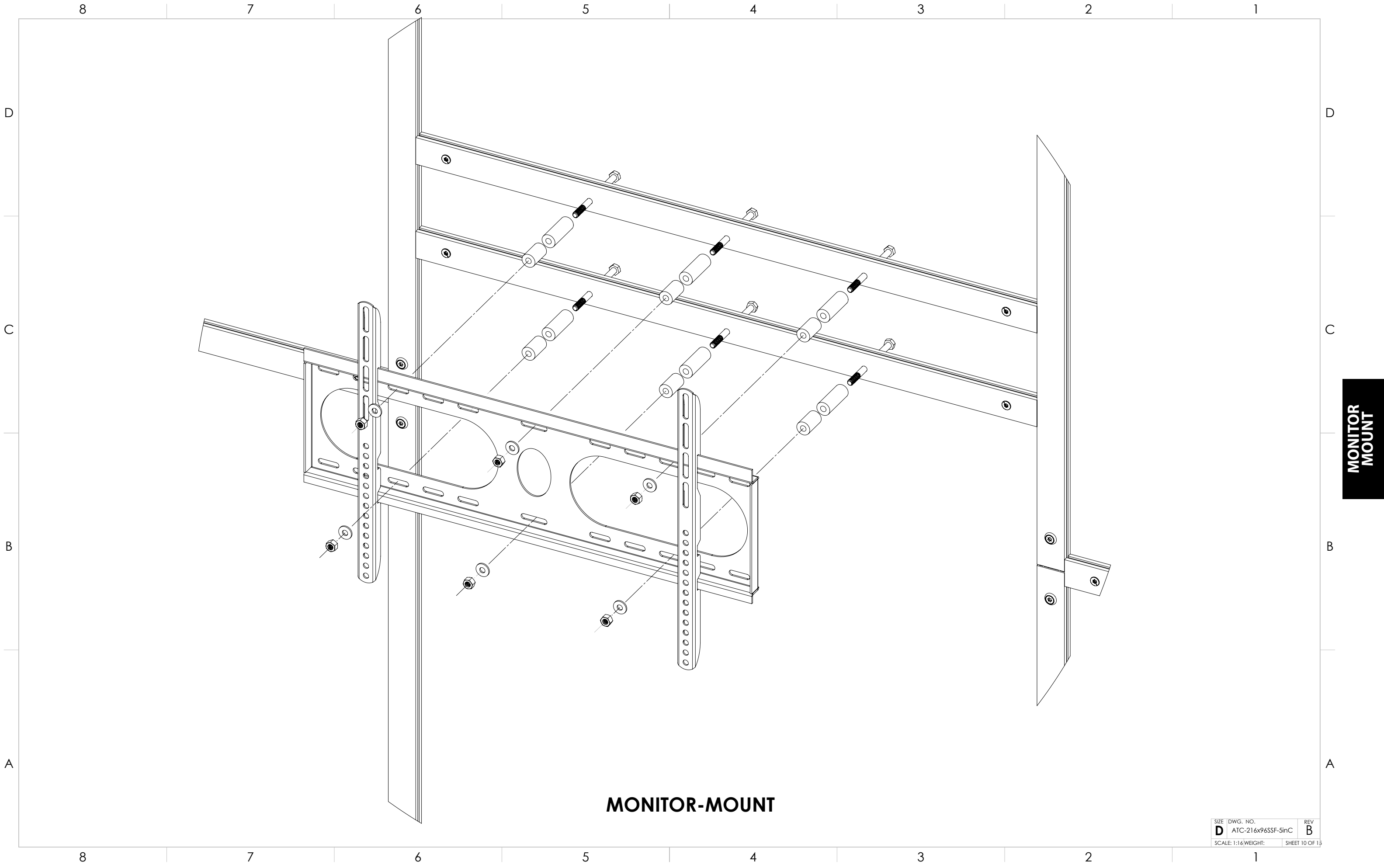
A

CENTER FRAME ASSEMBLY



CENTER FRAME
ASSEMBLY

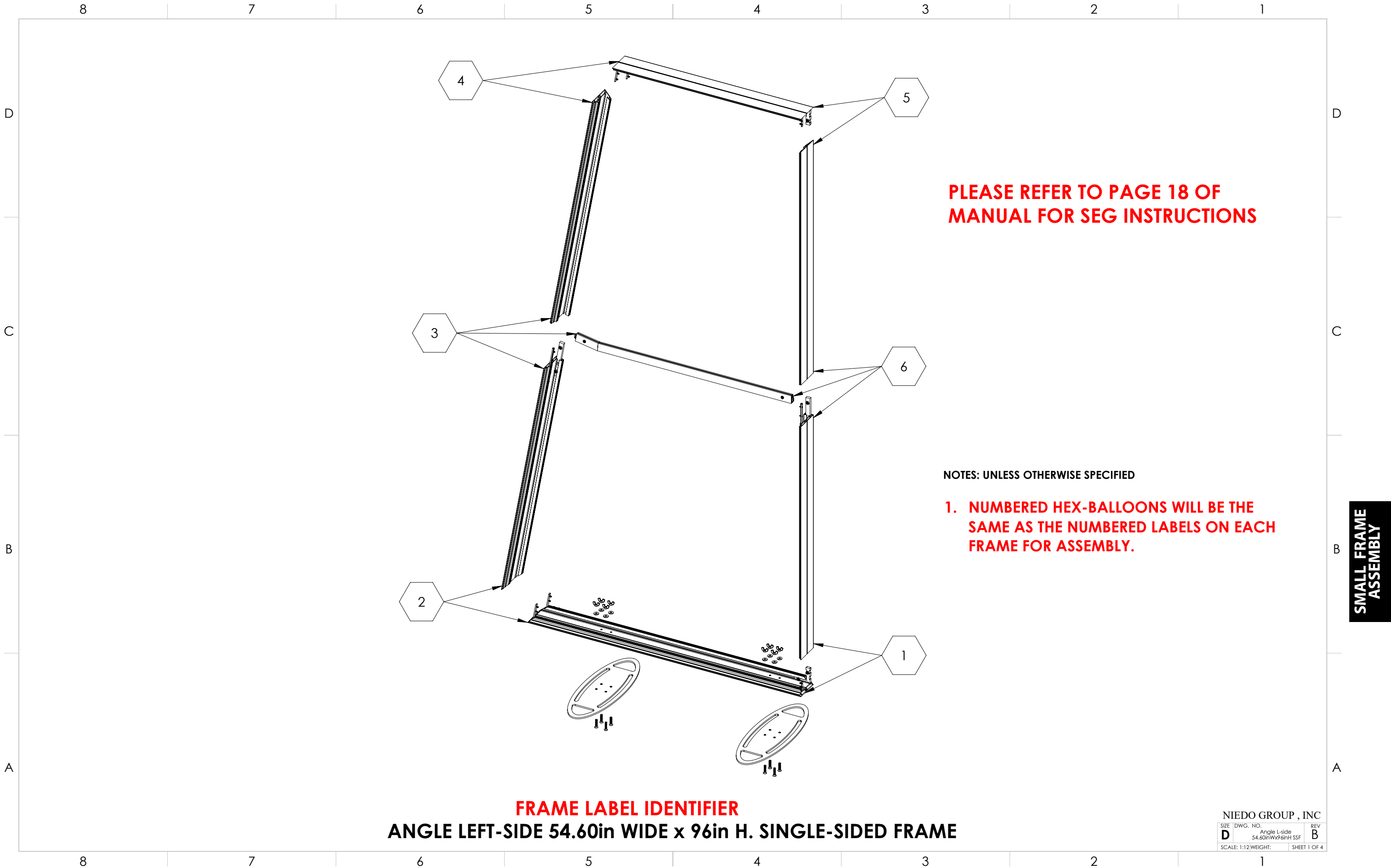
| | | |
|---------------------|--------------------|---------------|
| SIZE | DWG. NO. | REV |
| D | ATC-216x96SSF-5inC | B |
| SCALE: 1:16/WEIGHT: | | SHEET 9 OF 15 |



MONITOR
MOUNT

MONITOR-MOUNT

| | | |
|---------------------|--------------------|----------------|
| SIZE | DWG. NO. | REV |
| D | ATC-216x96SSF-5inC | B |
| SCALE: 1:16/WEIGHT: | | SHEET 10 OF 15 |



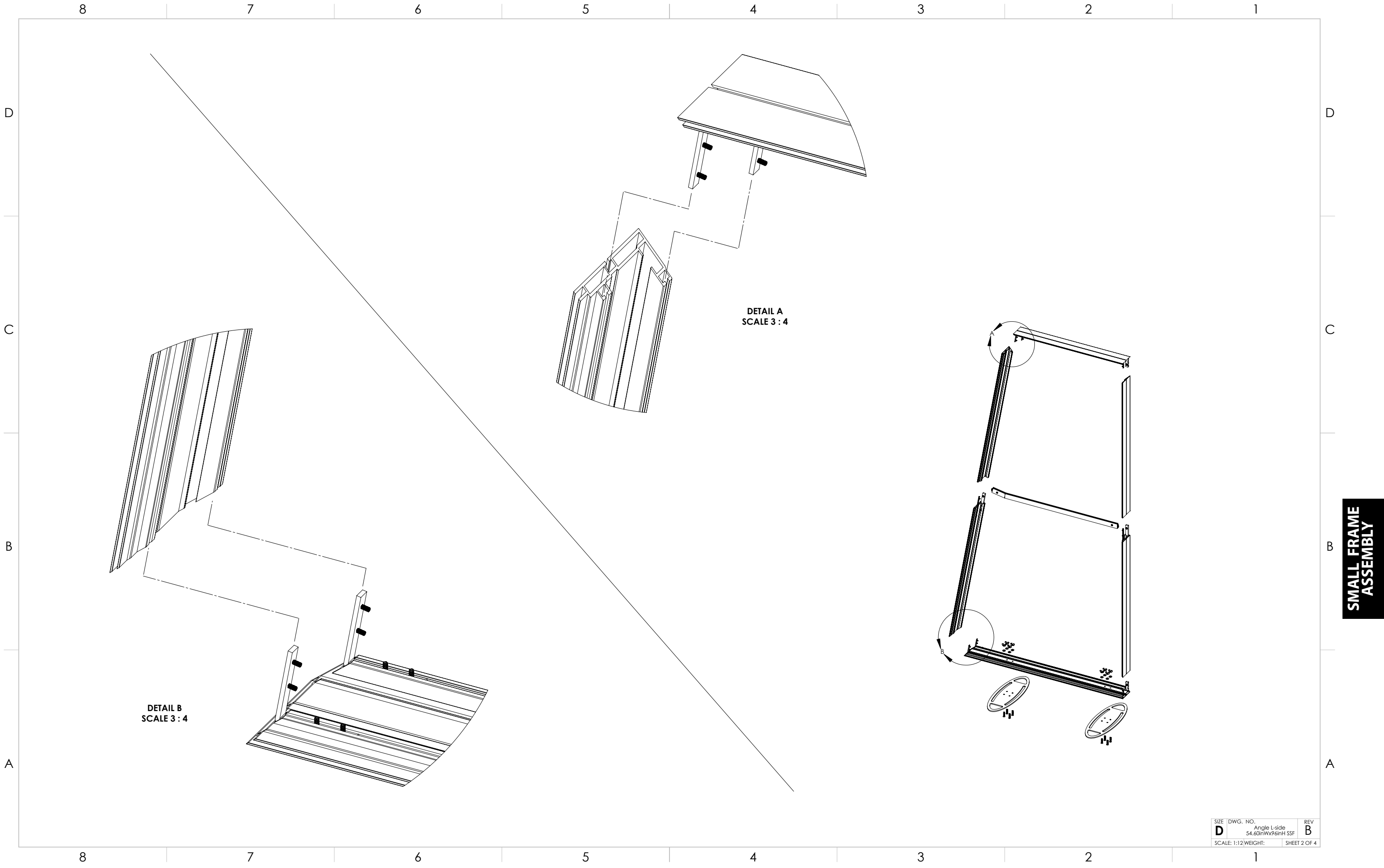
**PLEASE REFER TO PAGE 18 OF
MANUAL FOR SEG INSTRUCTIONS**

NOTES: UNLESS OTHERWISE SPECIFIED

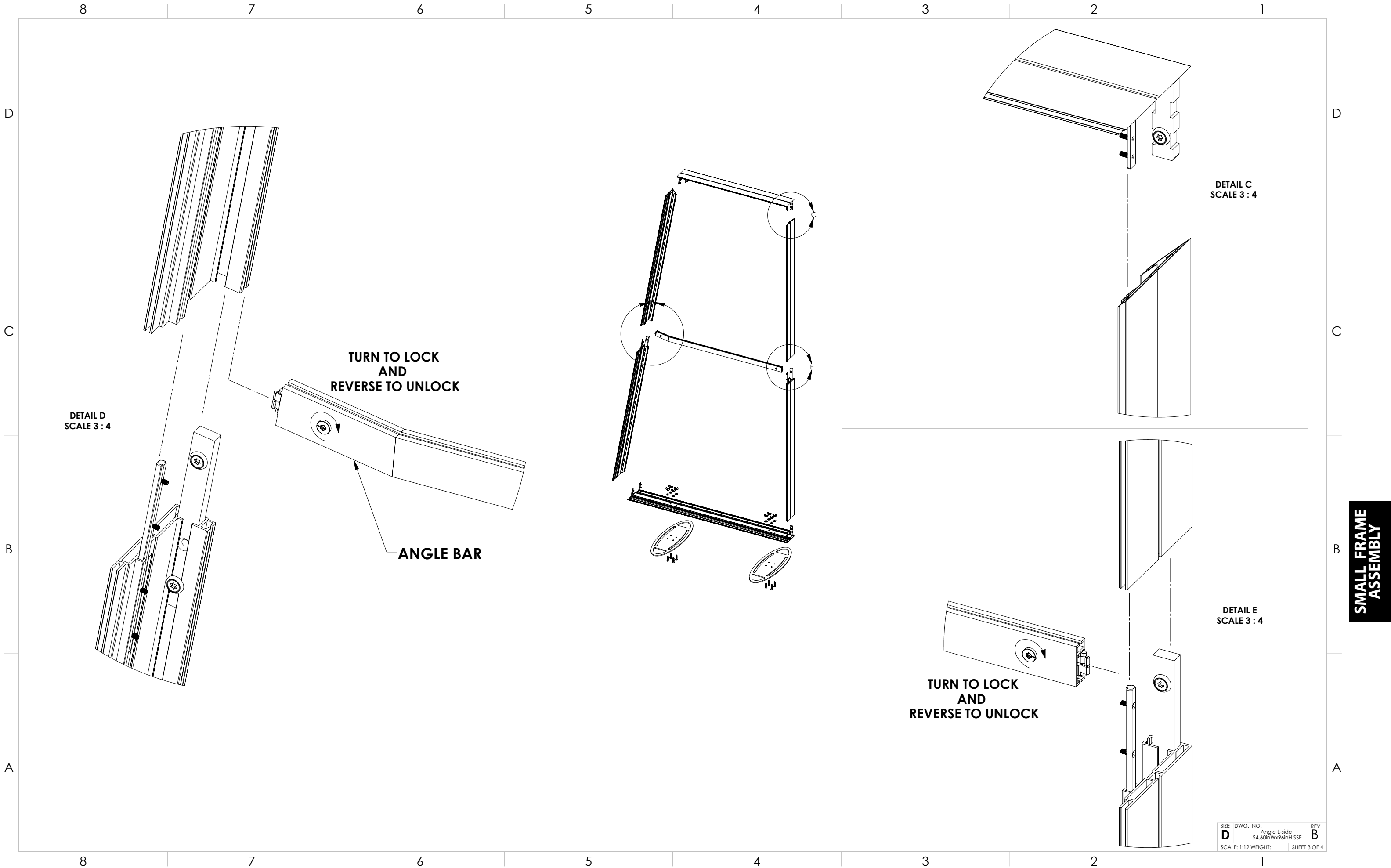
- 1. NUMBERED HEX-BALLOONS WILL BE THE SAME AS THE NUMBERED LABELS ON EACH FRAME FOR ASSEMBLY.**

**SMALL FRAME
ASSEMBLY**

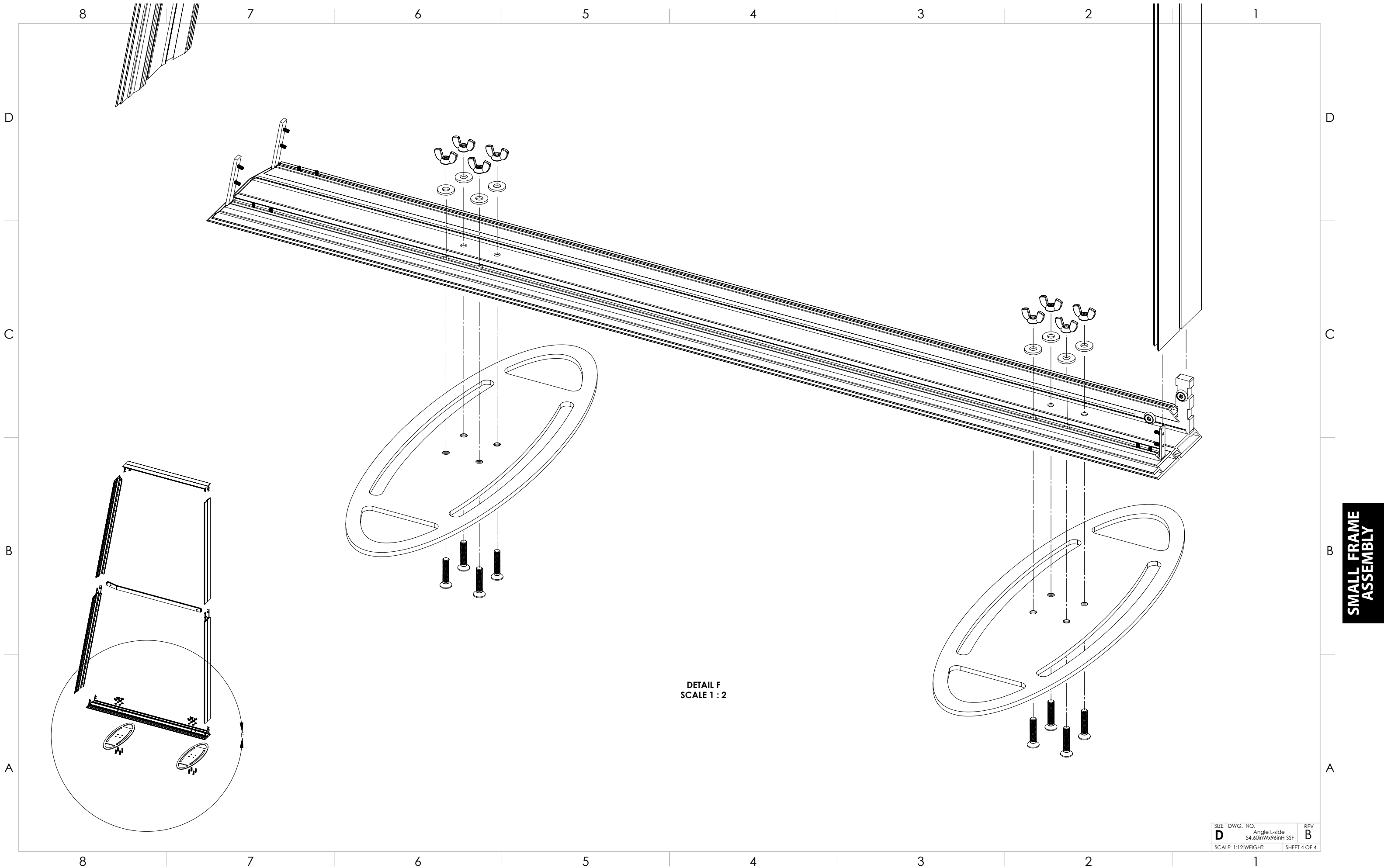
FRAME LABEL IDENTIFIER
ANGLE LEFT-SIDE 54.60in WIDE x 96in H. SINGLE-SIDED FRAME



| | | |
|---------------------|-----------------------------------|--------------|
| SIZE | DWG. NO. | REV |
| D | Angle L-side 54.60inWx9inH SSF | B |
| SCALE: 1:12 WEIGHT: | | SHEET 2 OF 4 |



SMALL FRAME ASSEMBLY



DETAIL F
SCALE 1 : 2

SMALL FRAME
ASSEMBLY

| | | |
|---------------------|------------------------------------|--------------|
| SIZE | DWG. NO. | REV |
| D | Angle L-side 54.60inWx96inH SSF | B |
| SCALE: 1:12 WEIGHT: | | SHEET 4 OF 4 |

PACKING - UNPACKING



Silicone Edge Graphics (SEG)

Installation Instructions into hardware

What are Silicone Edge Graphics (SEG)?

SEG are dye-sublimation fabric graphics with silicone strips sewn along the underside of the fabrics edge. SEG frames have grooves along their perimeter designed to snugly hold the silicone strips so the fabric can be stretched across the frame for a drum-tight fit.



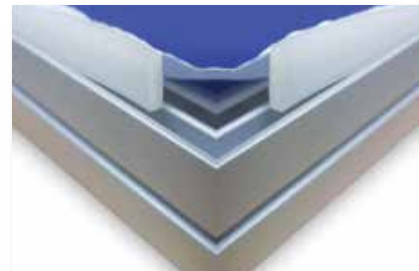
We recommend laying the frame on the floor, then draping the fabric graphic on top.

The following procedure ensures the silicone edge will be place evenly over the entire frame and **NOT STRETCH** or **GROW** at the corners. Once all the edges have been secured, you should have a taut fit with a smooth flat finish.

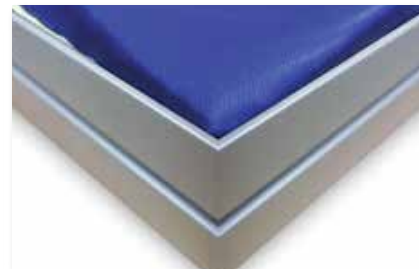
1: With Clean Hands,

Press SEG silicone edge first, into the corners of the frame.

INCORRECT WAY



CORRECT WAY



PRESS



Example: 36"x 36" frame

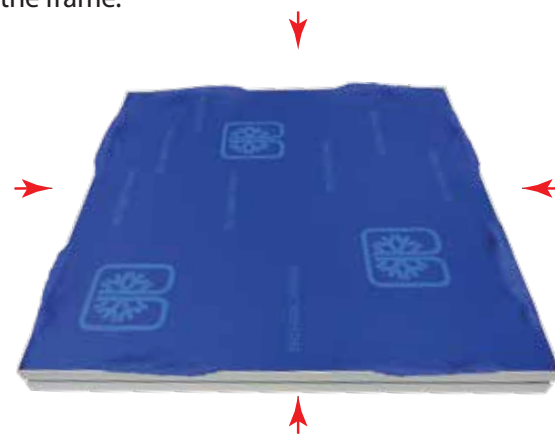
2: Working in Centers.

Go back and press the silicone edge into the center - on each side of the frame.

EXAMPLE: A 20"x20" fabric/frame would be pressed in 8 locations.



PRESS



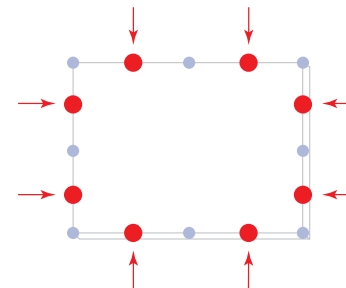
Cont'd.

3: Working in Centers again,

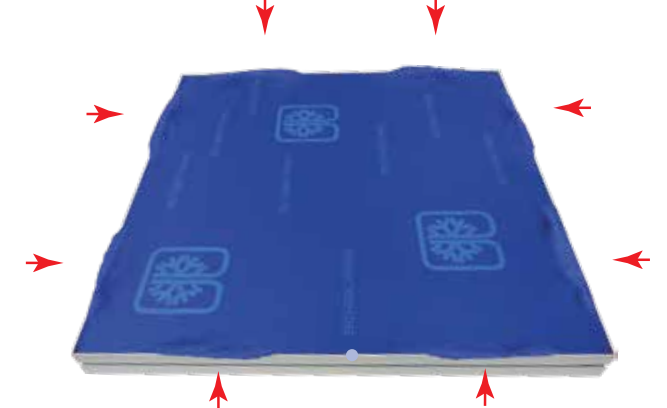
Go back and press the silicone edge once again on each side previous center, on all 4 sides.

Repeat this process, (WORKING IN CENTERS) until the SEG fabric's edge is pressed approximately every 6 inches apart.

EXAMPLE: A 8' x 8' frame (using this procedure) will have been pressed/tucked 15 times (not including corners) on each side of the frame.



PRESS



4: After all has been pressed into your frame using

this procedure, lightly tap your forefinger to smooth fabric between the tucks.



TAP INWARDS



CARE INSTRUCTIONS

Due to the fine quality, smoothness and weave of the fabric, great care must be taken to extend the life of your SEG fabric graphics.

We recommend very loosely folding your graphic, making sure there are no hard creases or folds or that the fabric doesn't catch on sharp objects.

Store in a clean bag.

A plastic bag or pillow case is ideal.

Graphics can also be spot cleaned with a damp cloth.

To wash entire graphic, use a commercial size front loading washing machine on gentle cycle with cool water. Do NOT dry clean.

You can also gently iron the back side using the Polyester setting of your iron.



SEG
ASSEMBLY

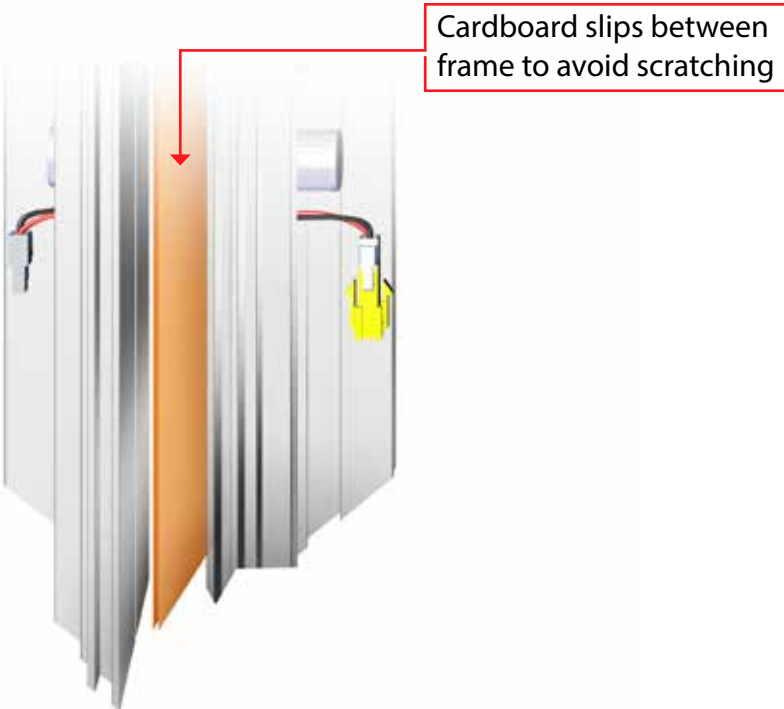
REVISED 04/2016

RETAIN ALL PACKING MATERIAL
will make re-packing easier and reduce the likelihood of shipping damage.

TIGHTEN ALL SET SCREWS AND LOCKS
when disassembling aluminum extrusions, to prevent loss during shipping.



CAUTION NOT TO CATCH OR PULL LED SOLDER WIRING



CLEANING / CARE INSTRUCTIONS

Use care when cleaning aluminum extrusion.
Use only non-abrasive cleaners.

When cleaning laminate, metal fusion or counter tops
use mild cleansers and a soft material such as cotton.

Keep all display components away from extreme heat and
long exposure to sunlight to avoid warping and fading.

STEP 1



Position straps.

STEP 2



Feed strap thru strap buckle.

STEP 3



Pull strap thru till snug.

STEP 4



Pull strap up parallel to case

STEP 5



Strap down and fasten to velcro